

Quick Card

T-BERD[®]/MTS-5800 Network Tester Tuning SFP+ Transceivers

This quick card describes how to tune the wavelength of MSA Compliant 10G tunable SFP+ transceiver using the T-BERD 5800. Note: Some vendors' SFP+ transceivers use proprietary tuning methods and cannot be tuned with the T-BERD 5800.

Equipment Requirements:

- T-BERD 5800v2 or T-BERD 5800-100G equipped with:
 - BERT software release V27.2 or greater
 - 10G Ethernet test options: C510GELAN
- MSA Compliant Tunable SFP+ optical transceiver



Information Requirements:

- Tuning Mode: Channel, Wavelength or Frequency
- DWDM Channel, Wavelength or Frequency



Figure 1: Equipment Requirements

Launch Test:

1. Press the Power button  to turn on the test set.
2. Using the **Select Test** menu or **Quick Launch** menu, launch the **Ethernet** ► **10GELAN** ► **Layer 2 Traffic** ► **Terminate** test on port 1.
3. Press the **Setup** Soft Key,  to display the **Interface/Connector** settings tab.

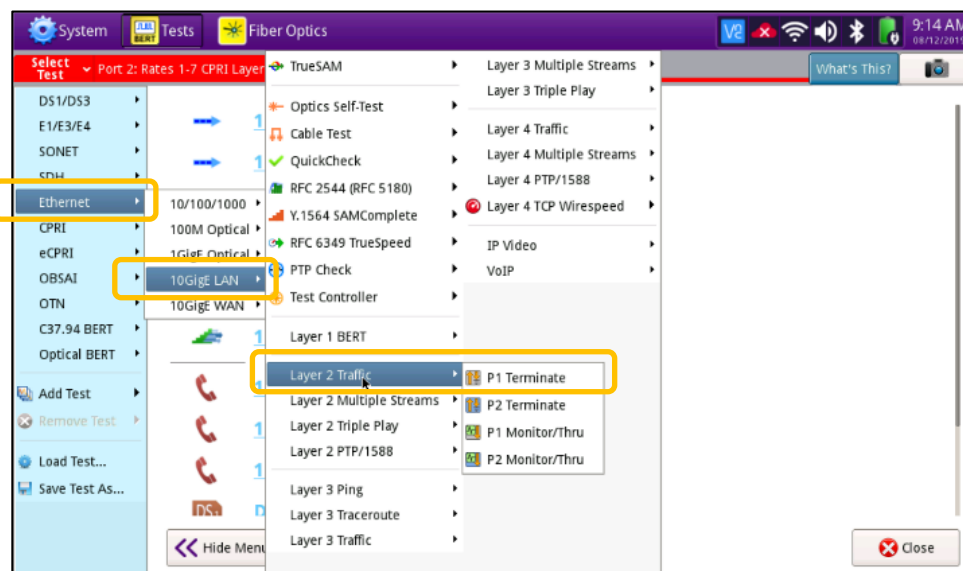


Figure 2: Select Test menu

Verify transceiver supports tuning:

1. Insert SFP+ into the Port 1 slot on the top of the T-BERD.
2. The **SFP** tab will populate with information about the transceiver. The 2nd column of the display will indicate whether tuning is supported.

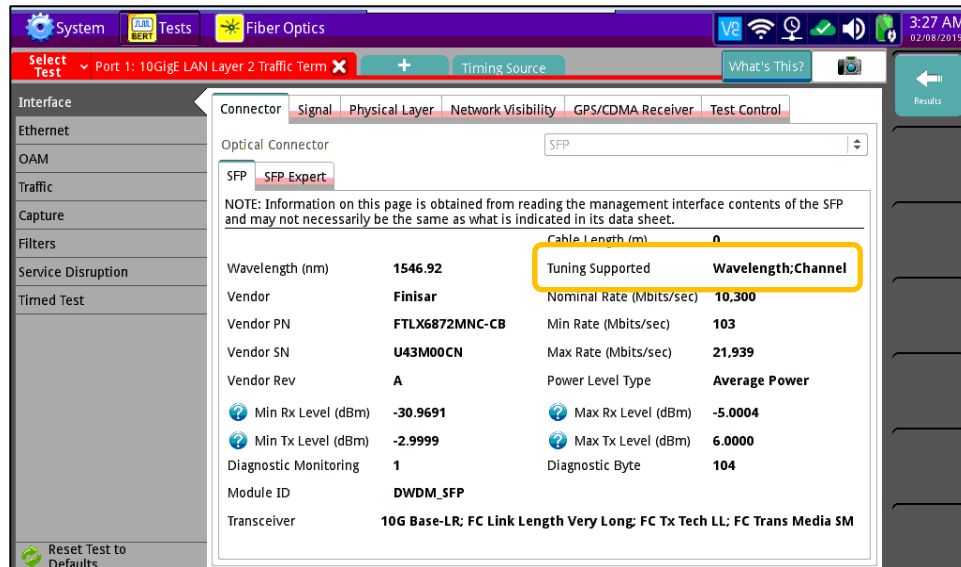


Figure 3: Interface/Connector Settings

Tune the SFP+:

1. Tap the **Signal** Tab to display **Tunable Device** settings
2. Select the **Tuning Mode**: Channel, Wavelength or Frequency
3. If you selected **Wavelength**, specify the wavelength in nm.
4. If you selected **Channel**, specify the channel number.
5. If you selected **Frequency**, specify the frequency in GHz.
6. The transceiver is tuned to the selected value, or nearest value in the ITU G.694 Spectral Grid.

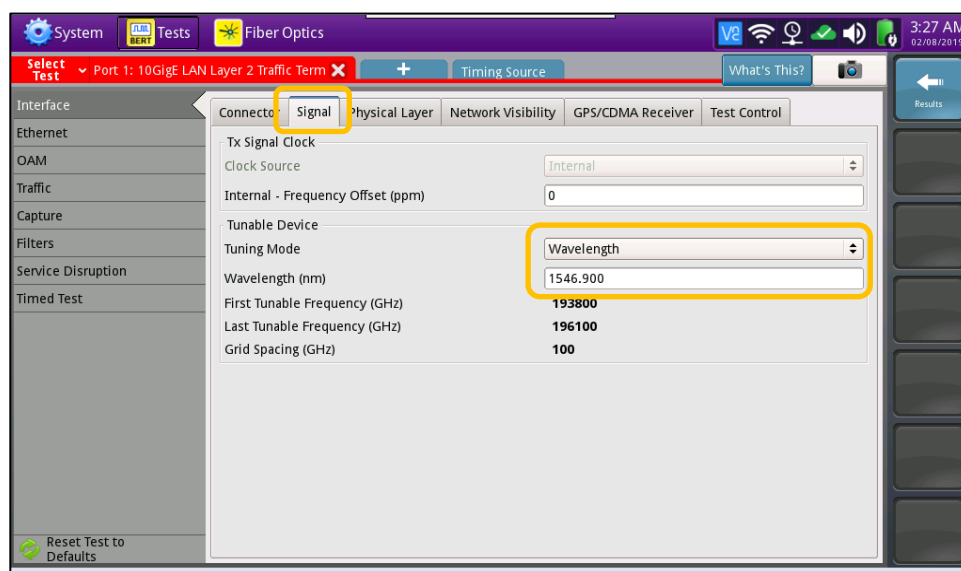


Figure 4: Interface/Signal Settings